



Tom Zaleske

Low cost, high value

Two cost-effective solutions from Dental Creations can provide terrific value for your lab.

The theme of many of my articles involves projecting quality and value in the dental restorations we fabricate. In many instances, obvious ways to enhance the value in our work can come from very low-labor and low-cost enhancements. Dental Creations out of Texas offers low cost products that allow for obvious but neglected ways to enhance the value of our restorations.

In many dental laboratories, model work is one of the most neglected procedures in regard to value projection. What many owners don't realize is the value of our work—even at the most rudimentary level—begins to establish the way in which our businesses are perceived in comparison to our competitors by our dental

clients. Simple things like model polish; neatness of the mounting; and condition of the models in regard to abrasions, bubbles and strength set a bar that others must conform to if they want to remain equal in comparison.

Dental Creations offers several products that not only provide better model accuracy, but also provide a higher level of presentation quality without costing an arm and a leg.

Wondergloss and Wonderadmix are two products that I have found help project a higher quality in my work, and also enhance the workability of the models used in the case fabrication.

In my laboratory, Wondergloss (Fig. 1) is a model glossing agent that I paint onto opposing models, or master models that are used to fit

finished provisional and flexible partials on. The application of the product provides not only a glossy surface, but also fortifies and provides a smooth surface on models that I will repeatedly fit and remove frames from (Fig. 2). Additionally, brushing Wondergloss over identification numbers, names or model base markings—such as alveolar ridge tracings (Fig. 3)—provides a smudge-free, water-resistant, low-cost way to preserve them during the repeated handling of the models (Fig. 4). To get around the necessity to dry models before application of Wondergloss, I have found that, by constructing a low cost drying box made from a dollar store storage container and an inexpensive hand held hair dryer, I have shortened the process of model

MAKING MODELS FASTER AND MORE COST EFFECTIVELY



Fig. 1 Use Wondergloss straight from the bottle and do not shake before using. Ideally, proportionate a smaller amount into a container and add when needed from main bottle. This will limit air exposure of the larger amount. Thin coats work better than sloppy dripping ones.

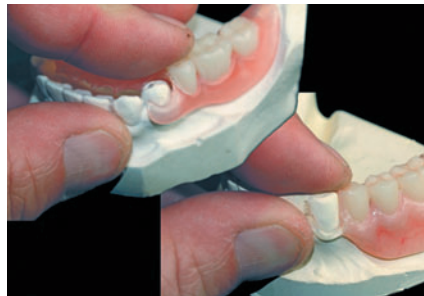


Fig. 2 Used in conjunction with Wonderadmix, Wondergloss provides a smooth, abrasion and chip resistant surface ideal for repeated fit adjustments over abutments on master models. Using Wonderadmix alone for reinforcing models used in processing flexible resin partials provides a stronger, smoother, working model.

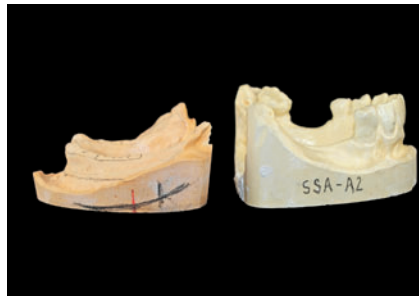


Fig. 3 A quick wipe of Wondergloss over names, tooth mold numbers, and landmarks such as ridge tracings, provides an economic, neat and smudge-free way to preserve reference information needed at your fingertips.



Fig. 4 Once Wondergloss is dry, the coating provides a water resistant sealing of information penciled on the model surface.



Fig. 5a A drying box constructed from a dollar store box and a hair dryer shortens the drying time of models and the coatings of Wondergloss to 10-15 minutes. Holes cut on sides allow for air flow through and also prevents the dryer's thermal sensor from overheating.



Fig. 5b A food dehydrator also is an easy, economic way to speed up model and Wondergloss drying. It also comes in handy for drying separator coated denture flask molds.



Fig. 6 Wonderadmix is supplied in the syringe. The bottle is empty but holds the correct amount of water when filled for the correct ratio for the syringe amount. It also means the shipping charges do not reflect a gallon of liquid in weight but rather a syringe and an empty bottle. Shake well each time before measuring out liquid to make a model.



Figs. 7a and 7b Measurements for an average model are 150gr of stone to 50 mL of Wonderadmix. Consistency of stone when mixed for models or capping is smooth, creamy and easy flowing. Slight vibration immediately causes it to flow.

drying, and the drying of multiple coats to a 10-15 minute chore. Similarly, I have also used an inexpensive food dehydrator for the accelerated drying processes as well (**Figs. 5a and 5b**).

Wonderadmix is another product I use to enhance and fortify my model work. This product replaces plain water with a formulated additive that is mixed with water to enhance existing properties of the stone.

The large bottle supplied with Wonderadmix comes empty, as the product is actually contained in the syringe and is added to the bottle along with regular tap water. This saves greatly on the cost of shipping premixed gallons of the product (**Fig. 6**). There are noticeable improvements in the flowing property of the stone without the use of debubbler, the smoothness of surface texture and the reflection of detail

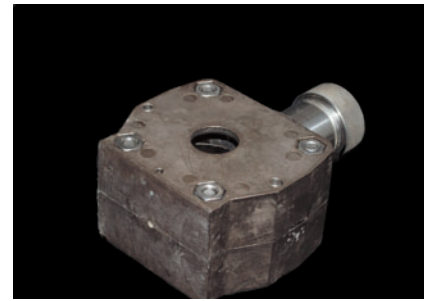


Fig. 8 Bolted injection flask necessitating a capping pour made through a hole in the top. Because you cannot see inside the flask, it is critical that the pour is smooth, flowing and bubble-free to provide a complete and accurate fill.

when compared with models made with plain water (**Figs. 7a and 7b**). I also use this product when capping or performing a secondary pour of stone into a closed, bolted flask, such as the ones used in injection and some microwave systems. I fabricate my partial denture models with stone fortified with Wonderadmix because I want to protect models against chipping and breakage during the numerous handling steps involved in the



Fig. 9 The value projection for every case starts with boxed, smooth, clean and accurate models. It doesn't take a fortune in products, just the correct products.

fabrication of alloy and flexible resin frames. With two simple and inexpensive products, I not only improve the presentation quality of the work my lab produces, but also—and more importantly—enhance the overall quality of the work by eliminating factors that cause remakes and lower quality, by fabricating on smooth, strength-fortified, master models for just pennies a case (**Fig. 9**). [lab](#)



3Z LAB

Dental Wax-ups Perfected

Next Generation 3D Printer

Solidscape's new 3Z® Lab printer features an open architecture design for today's dental lab digital workflow.

Uncompromising Surface Quality

The 3Z Lab delivers superior dental wax-ups ready for casting crowns and copings with superior margin fit and occlusal morphology.

Ease of Use

With intuitive one-touch operation, the 3Z Lab is tailored to optimize batch processing while driving down the cost-per-case with a breakthrough MRSP of: \$25,650 USD

US customers may qualify for significant year-end tax savings. Contact us today!



Solidscape®
When 3D Precision Counts

www.solid-scape.com

Interested? Circle Product Card No. 11