

# Z-shine diamond polish kit

## The Ultimate Diamond Polish



Figure 1:  
5 gram kit

Item #800  
\$54.95

Dr. John O. Burgess DDS, MS of the University of Alabama, as well as Dr. Gordon Christensen have done numerous articles on diamond polished surfaces versus surface glazing on ceramic restorations. Moreover, there have been numerous studies done on tissue response to glazed versus polished porcelain. According to these articles and studies, the tissue response to polished porcelain is significantly better. The conclusions from several studies show polished zirconia is "wear-friendly" to the opposing tooth. Whereas glazed zirconia causes more material and antagonist wear than polished zirconia. The surface roughness of the zirconia was significant in the wear of the opposing dentition. As these studies are becoming more widely presented, the requests for polished occlusal surfaces with no surface glaze has increased significantly.

When Z-Shine Diamond Polish was first presented some lab technicians just rolled their eyes because they really doubted that they could get a high luster shine with a ONE step diamond polish. The standard diamond polishing multi-step process has at least two smoothing steps and then use of a felt wheel on the broad surfaces, plus the final onerous step of cleaning the polished units. The real challenge for me came from the occlusal surface anatomy. This process took quite a bit of extra time and was difficult compared to applying surface glaze and firing. Z-Shine from Dental Creations, Ltd. has really simplified the process for the technician.

Z-Shine Diamond Polish is the best I have ever used. All I need to put a high luster polish on e.max or milled zirconia after the bite and contacts have been completed is a #11 soft bristle brush wheel, Z-Shine Diamond Polish, and a slight amount of water to keep the surface wet. I have found that diamond polish works best when you keep it wet with a water spray or dip it in a small bowl of water.

Z-Shine is specifically designed to polish 21st century dental ceramic materials. The really unique aspect with Z-Shine is it works in seconds - it took 15 seconds to mirror shine the labial surface of a maxillary central and 2 minutes to completely put a high luster shine on a full contour molar which included the occlusal surface anatomy as well.

Another unique feature of Z-Shine is that a fine diamond burr can be used to create a specific surface patina. Also, when you use a #11 soft brush wheel, Z-Shine will put a brilliant shine to the surface porcelain without obliterating the fine surface detail of the porcelain. When desiring a mirror finish on the surface porcelain, use a small felt wheel like in the Z-Shine Diamond Polish Kit (Fig. 1).

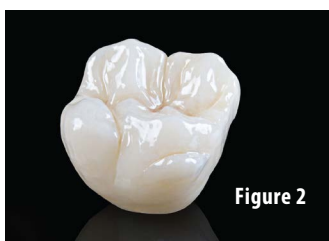


Figure 2

Z-Shine enables you to get a lustrous shine without over polishing the surfaces leaving a tooth enamel surface feel. For example, Z-Shine can be used to final polish a milled zirconia bridge with no surface staining or glazing (Fig. 2). Also, the layered e.max laminates #6 - #11 in Fig. 3

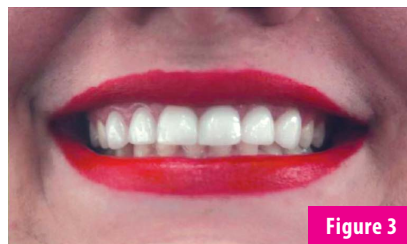


Figure 3



Figure 4



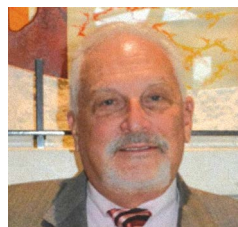
Figure 5

are not surface glazed. To obtain a natural surface luster finish on an e.max or on a zirconia restoration, use a #11 soft brush wheel (included in the kit) and Z-Shine.

Teeth #6 and #7 (Fig. 4) are single crowns with layered zirconia using Vm9 layering and then surface finishing with Z-Shine and a #11 soft bristle brush wheel with no surface glazing. The bridge for teeth #8 - #11 (Fig. 4) is full contour zirconia/Talladium AT high translucent without glaze. The lower anterior restorations #22 - #27 (Fig. 4) are layered Ceramco 3 feldspathic jackets that are finished by polishing the surfaces with Z-Shine diamond polish and a #11 soft bristle brush wheel.

Another feature of Z-Shine, as shown in Fig. 5, is that the layered e.max #10 restoration is polished with Z-Shine and

matches the natural adjacent teeth. Once you have the surface luster you desire the Z-Shine quickly washes off with a tooth brush and water in a few seconds. I polish all of our zirconia and e.max restorations in just a few seconds.



### Danny W. Diebel CDT, FNBC

Owner of Dental Arts Studio Inc., in Austin Texas for 40 yrs. Graduate and adjunct faculty of UTHSC in San Antonio TX. Served in the USAF. Currently working in house on the team of Lisa Burkett DDS, MS, FACP, specializing in Prosthodontics.

from the makers of Wonderfill®  
**dentalcreations** ltd.

Visit [wonderfill.com](http://wonderfill.com) or call 1.254.772.4661.